

FOILBOARDS 2015 collection



fone

Kite foiling is becoming a very popular aspect of kitesurfing, this is how F-ONE approached this new discipline

We have been following the evolution of foiling since the first days of the discipline and some of our riders have been foiling since the early days of the sport. We are in contact with our riders that have constantly been involved in the discipline.

In 2009 we looked into bringing a foil into the market, but it was too different than what we specialized in and produced. We also had the opportunity to purchase a brand, but this does not fit with our vision. Taking over a product that had already been developed, and buying a brand comes with its share of problems as well. We wanted to start from scratch, with our vision and approach to develop a new product.

To launch a foil we needed the same characteristics that we use for all of our product line:

- A competent designer and exclusivity: a competent designer you understand why, an exclusive design is to avoid doing research for others.
- Testers of all different levels.
- An original design that we would possibly be able to patent. It is always in the early days when you can pick up the best options and protect them for the future.
- A factory able to produce excellent composites, because foils are a very technical product.

The Team

We already had a team of foilers dedicated to this foiling adventure



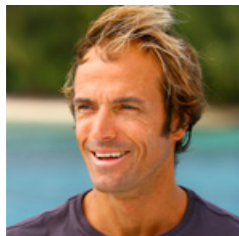
Marc BLANC, is an emblematic figure in kite foiling, he teaches it at his kite school, he is considered an expert in the discipline and possesses an incredible amount of ease in riding and general knowledge of foiling. His feedback in testing was crucial. He was able to feel the slightest modification and provide input to improve and bring new ideas to the design.



Alex CAIZERGUES, Speed specialist, multiple time Speed record holder and has been foiling for many years. He also contributed a lot to the design of the foil. He was able to test it at high speeds and explain the sensations he was getting while riding.



Raphael SALLES and **Micka FERNANDEZ**, recently started foiling, this gave us the feedback from beginners and allowed us to focus on the key components of the foil design.



FROM R & D TO PRODUCTION

DESIGN

Two years ago we hired a naval architect specialized in fluid dynamics. He has been designing all of our boards and other injection pieces since. The foil design is naturally part of his forte. It is important that we leave our comfort zone of "Shaping" boards and focus on fluid dynamics and all the theories that go with it.

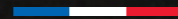
It is thanks to a complete team composed of foil testers and specialists that we are able to present you our **first foilboards collection**.

PATENT

For this project we patented the assembly system of the foil between the fuselage and the wings. This is essential because it makes the structure extremely solid and reliable while making the assembly and disassembly very easy. The front and rear wings are also securely maintained in their original position over time.

FACTORY

MADE IN FRANCE



After working with our usual factories and other in Asia, we realized that we needed a factory that was very specialized and close to us. This brought our production back to France. Our foils will be made in France using "Prepreg" technology but certain pieces will be made using "Forged Carbon", this is a technology used in aeronautical and military industry.

TECHNOLOGIES

PREPEG

With Prepeg the carbon fiber is directly impregnated with epoxy resin by the manufacturer, this guarantees a perfect ratio of epoxy to carbon ratio and quality. The material is handled in cooled rooms and catalyzes at 120° C in a mold. The Prepeg fibers must travel in refrigerated trucks and be stored frozen. The optimized ratio of carbon fiber to resin gives you the best characteristic properties of carbon fiber.

FORGED CARBON

This technology uses the same principals as Prepeg but uses a different fiber that is more adapted to mold small and complex pieces. It allows us to build small precise pieces that are very reliable.

BENEFITS

The advantages of these two technologies are their high end mechanical properties, but also their fast production cycle that allows us to build quickly (1h to produce a mast in Prepeg and only 10 minutes to produce a Forged Carbon piece). This is crucial for delivering a high quality product made in France. It is a very specialized and complete team that was assembled to create this first collection of foils.

K.F BOX



All F-ONE foils are equipped with the KF-BOX featuring 4 conical faces for a super easy fit. Thanks to its moderate depth, it can easily be adapted onto surf kiteboards while offering ideal support to fix the mast. The KF-BOX is compatible with foils from F-ONE and KETOS.

FOILBOARD F-ONE 2015



FOILBOARD F-ONE

5'1"

156 x 51 cm

30 L

3.5 kg*

BAMBOO
ST
BAMBOO SANDWICH TECHNOLOGY

CONCAVE
DECK

K.F BOX

EQUIPMENT

Full pads

K.F BOX

F-ONE surf straps (optional)

*Indicative values, subjected to slight variations.

This board was created to be a 100% dedicated foil board with the characteristic that are required for practicing this new discipline

With its large volume and large tail it is very well adapted to beginners. It generates enough float at low speeds and gives a lot of flexibility in footstrap placements.

Compact in design do reduce drag from the wind, the top deck is concaved to maximize comfort and control. The bottom deck is shaped in a triple V contour with a precisely tuned concave, combined with a strong nose rocker to soften the impact when the board touches down.

The rails are high and inverted to reduce drag when the board "taps" the water while edging hard upwind.

Equipped with multiple strap attachment points to facilitate tuning, it is also equipped with the **KF-BOX**.





FOILBOARD FOIL CONVERTIBLE 2015

PRO MODEL

Mitu MONTEIRO

FOIL CONVERTIBLE



We also decided to offer a board that was a 2 for 1

The Surf pro model **MITU MONTEIRO** in **5'6"** / **5'8"** / **5'10"** will also be offered in its "convertible" version: equipped with a **KF-BOX**.

The concave on the board allow it to accelerate to lift off easily and the rocker and outline of the pro model **MITU MONTEIRO** make the transitions and progression easy when they are done on the water.

With its very efficient and all around shape combined with the new construction **HD FOAM FLEX COMPOSITE**, tough and light, the surf **MITU MONTEIRO** Convertible is the perfect board to not miss a session without loading your quiver.

5'10"

176.5 x 48.5 cm
21 L
3.750 kg*

5'8"

171.5 x 47 cm
20 L
3.670 kg*

5'6"

166.5 x 46.5 cm
19 L
3.450 kg*



- New **HD FOAM FLEX COMPOSITE** construction
- New **HEEL SHOCK ABSORBER**
- **CAMEL DECK**
- New size 5'6" x 46.5 cm
- Width reduced by 1 cm on all sizes
- New nose channel
- New front pad kick
- Redesigned compact grab rail
- Lighter weight
- Increased versatility
- Amazing feeling !!

EQUIPMENT

Full pads
FUTURES® fins
FUTURES® box
K.F BOX (+ box shutter)
F-ONE surf straps *(optional)*

*Indicative values, subjected to slight variations.



F-ONE SAS
ZAC de la Méditerranée
170, Route de la Foire
34470 PÉROLS - FRANCE

Tél. +33 (0) 4 67 99 51 16
Fax. +33 (0) 4 67 99 61 93

www.f-onekites.com